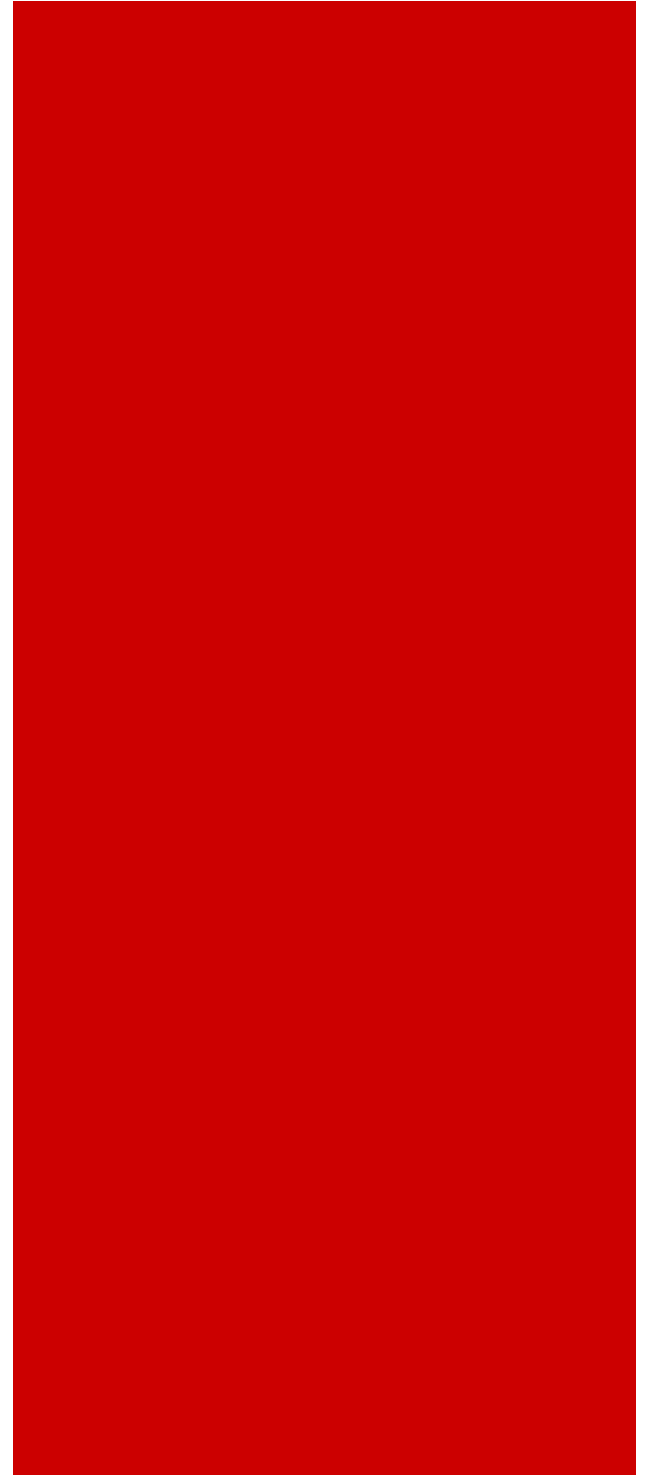
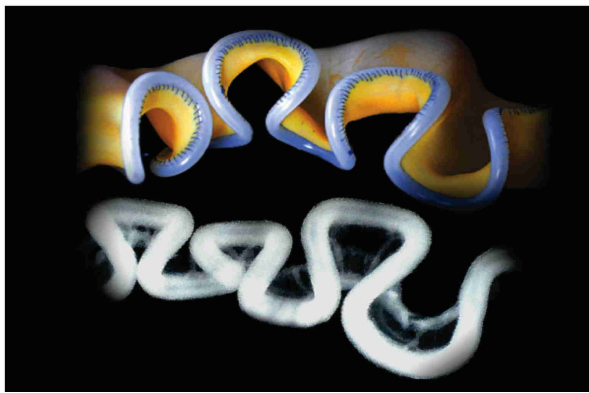
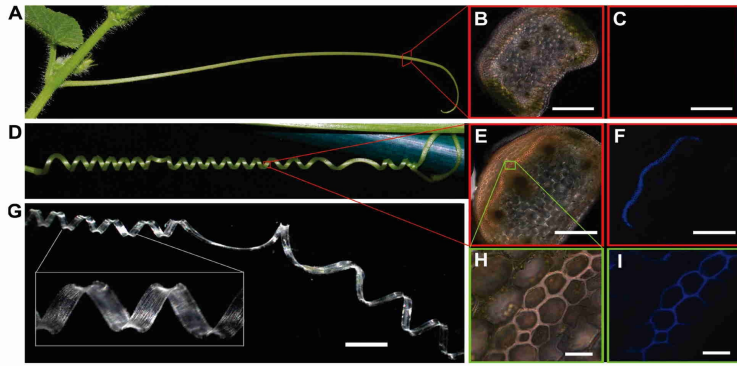


# Boston University Physics Colloquium



## On Growth and Form: Geometry, Physics and Biology

The diversity of form in plants led Darwin to state that it is "enough to drive the sanest man mad", begging the questions of how to describe this variety and how to predict it? Motivated by observations of geometrical forms in plants and animals ranging from leaves and flowers to vertebrate guts, I will show how a combination of biological and physical experiments, mathematical models and simple computations allow us to begin unravelling the physical basis for morphogenesis.

**L. Mahadevan**  
Harvard University

September 18, 2012 (Tuesday) at 3:30pm (Refreshments at 3:00pm)  
SCI 109, Metcalf Science Center, Boston University  
Call: Winna Somers (wsomers@bu.edu) (617) 353-9320  
Host: David Campbell