

▶ Moon Matrix: “Diagram” of the Moon

BY Keke Katende

Boston University Physics eLab Open House: April 29, 2021

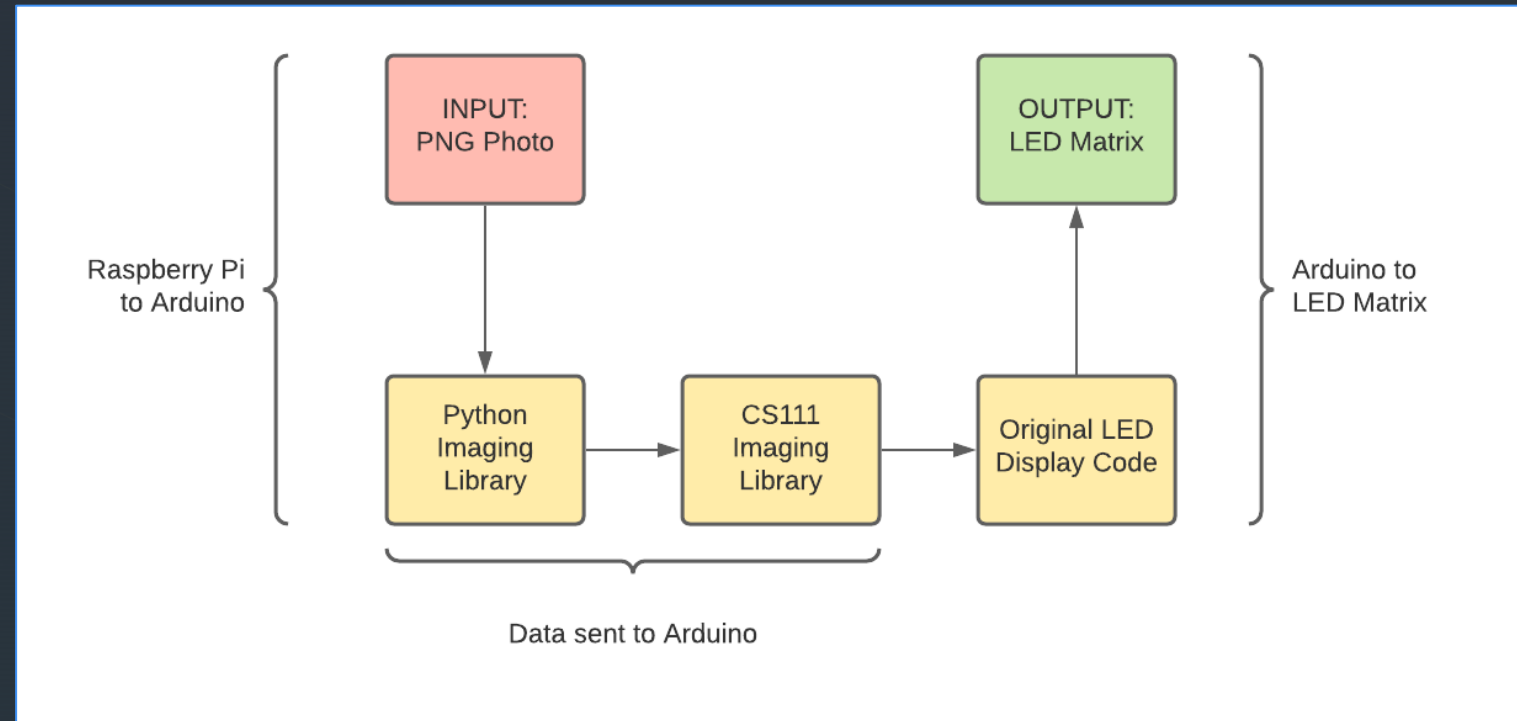
Keke Katende - Boston University

Block Diagram

INPUT: PNG File

“GUTS”: Python

OUTPUT: LED Matrix

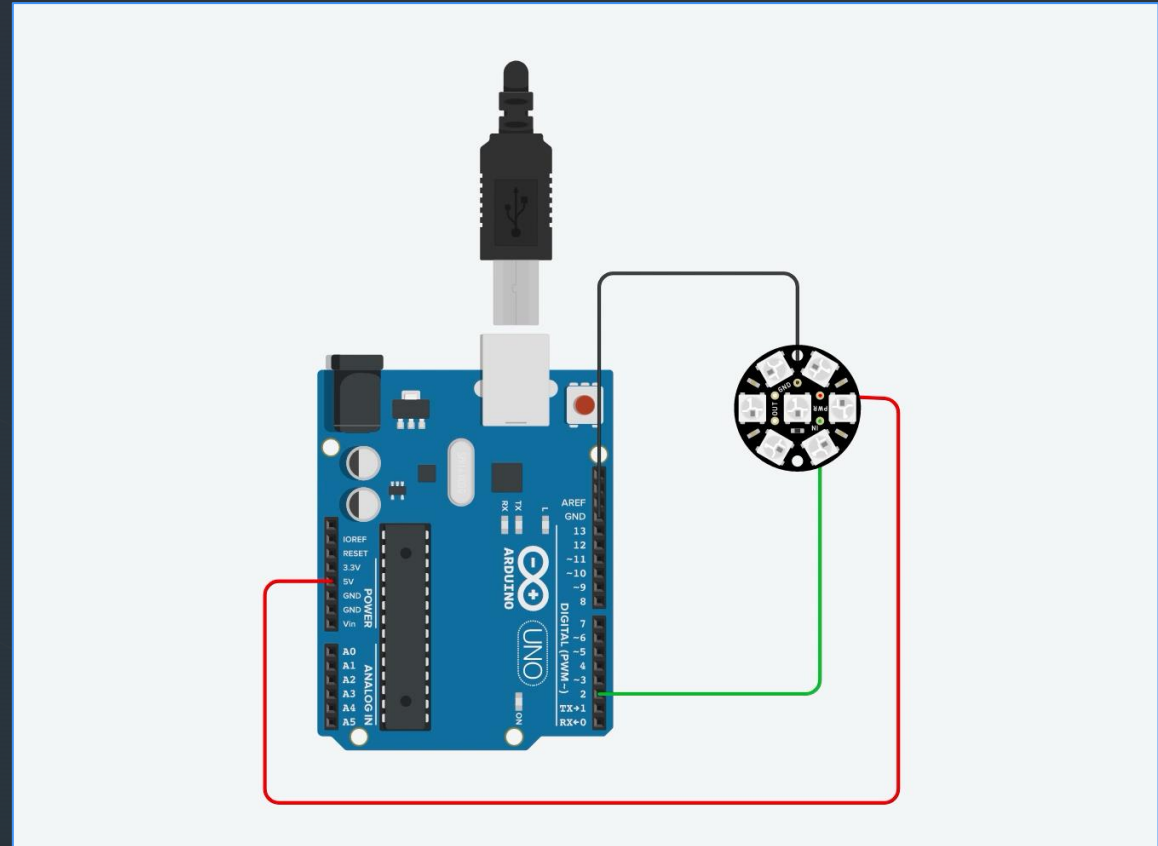


Schematic

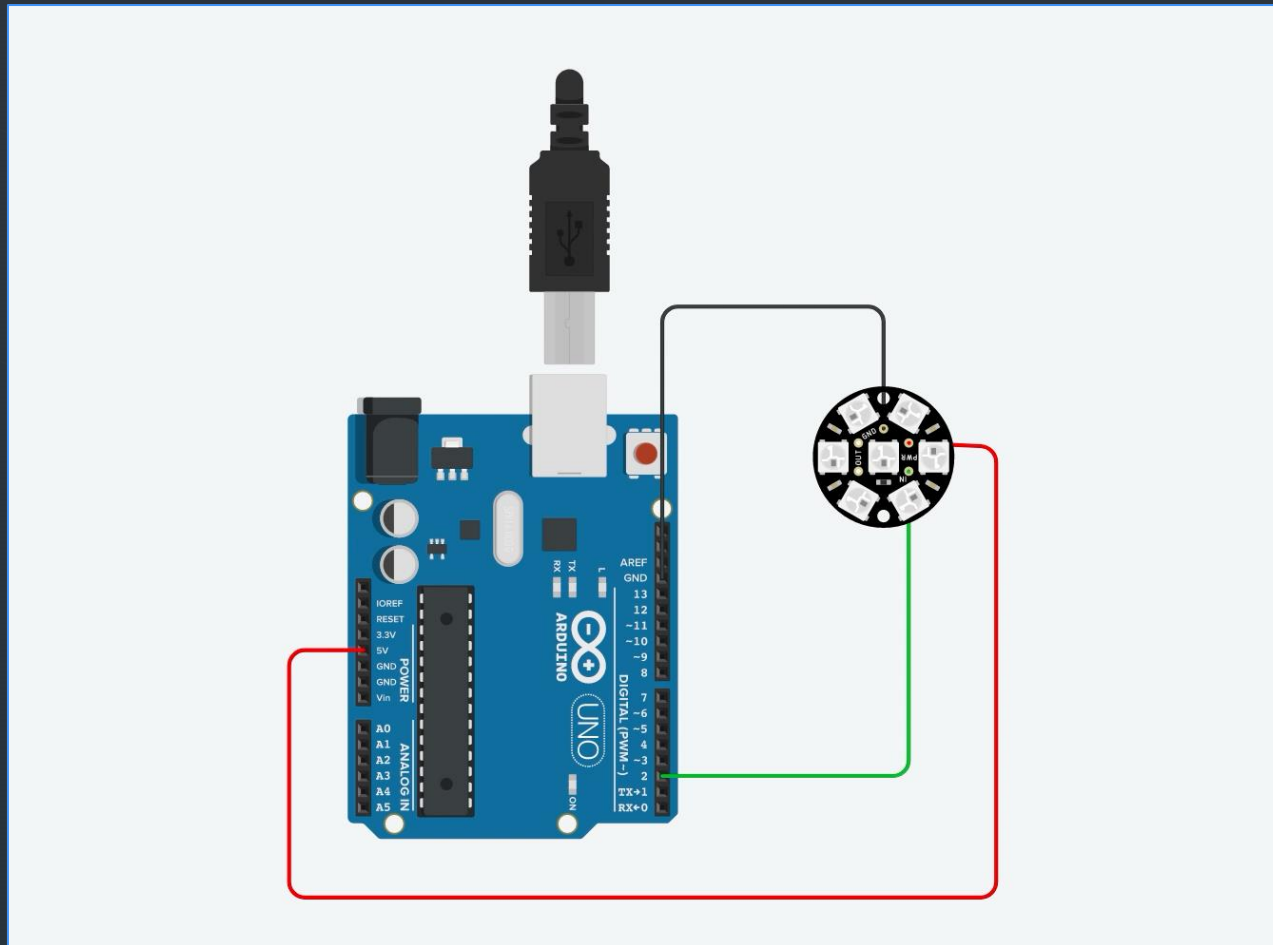
COMPONENTS:

Microprocessors and LED matrix

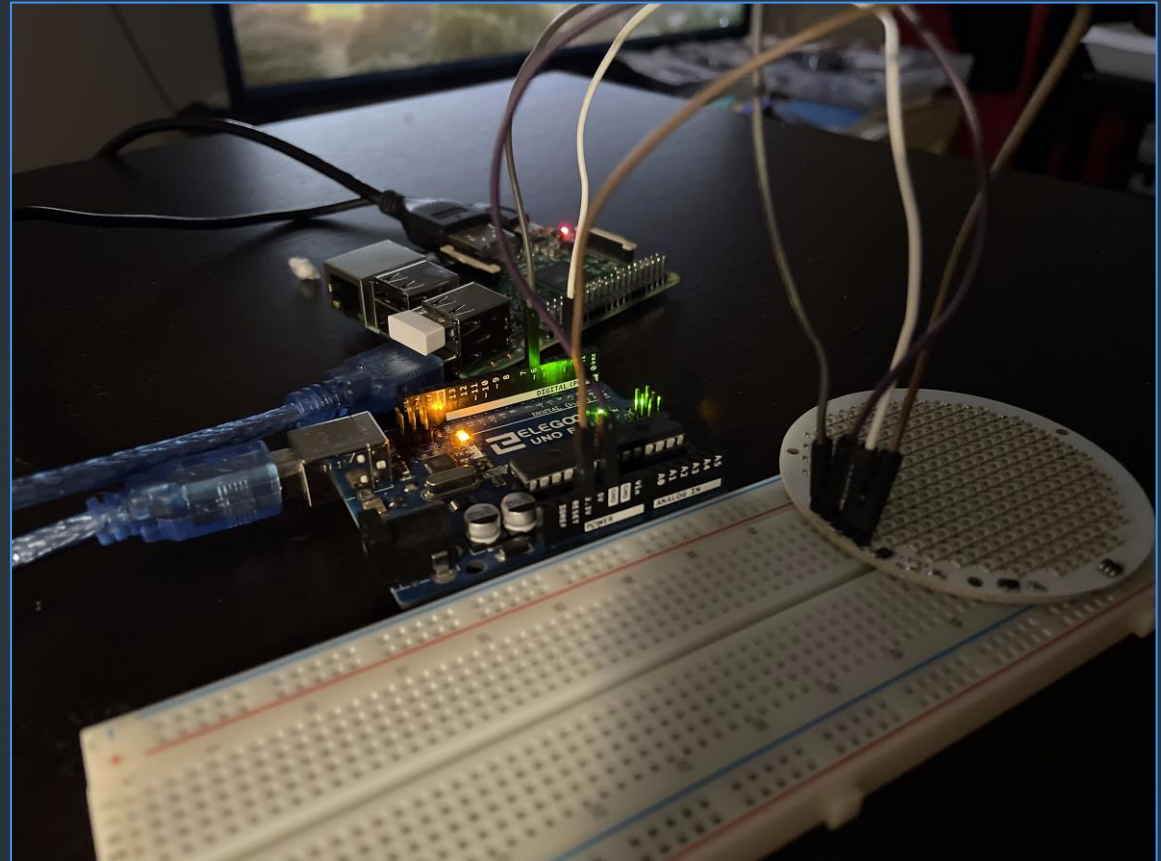
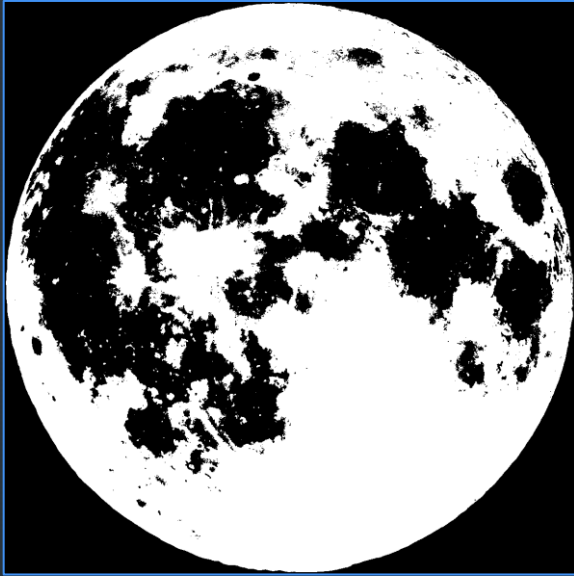
+ Code-driven circuit



Desired Result



Components

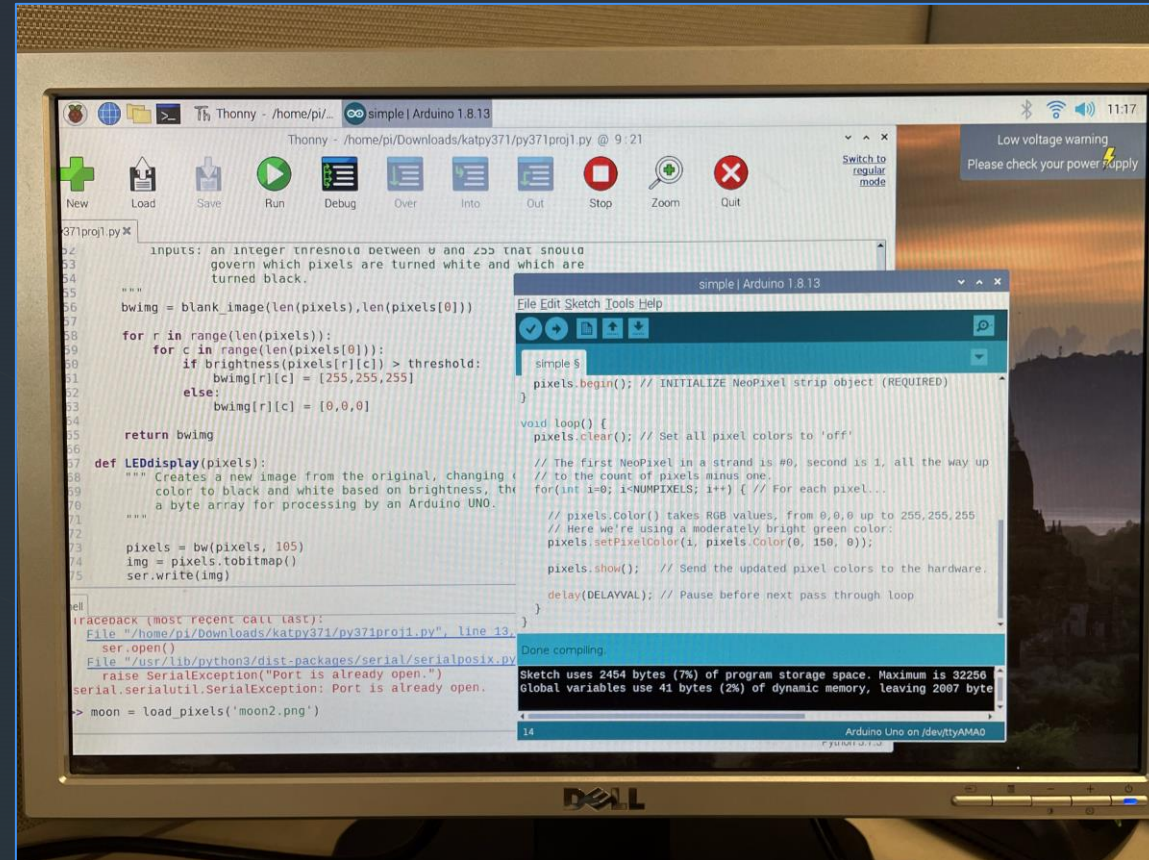


Struggles

+ Which library?

+ Soldering

+ Power



▸ Thank you!