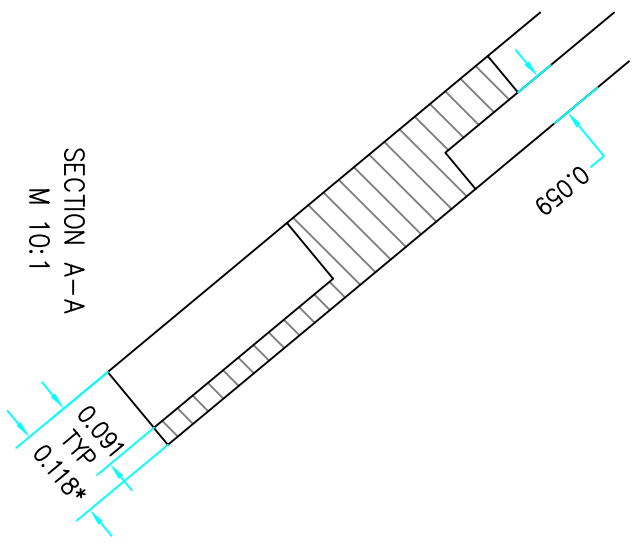
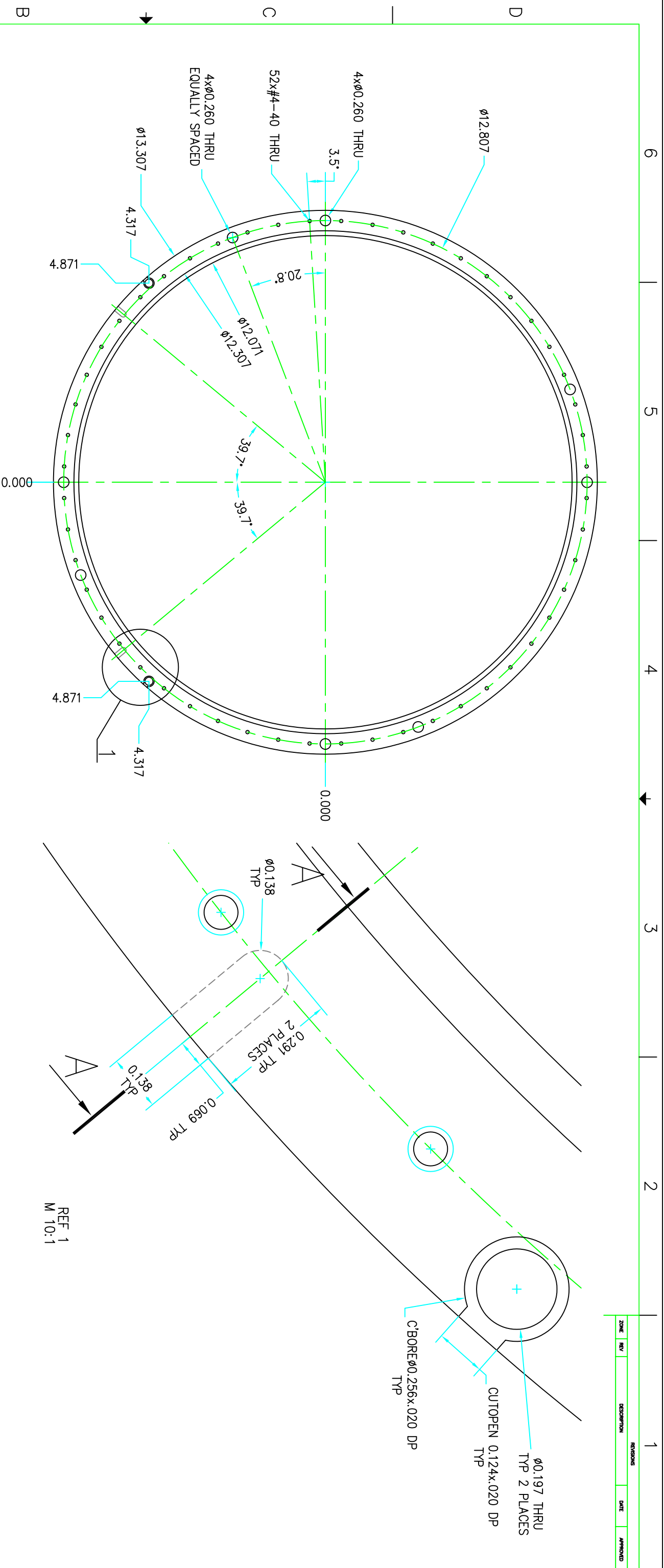


ZONE	REV	DESCRIPTION	DATE	APPROVED



* REFERENCE ONLY
NO LUBRICANT ALLOWED WHILE MACHINING

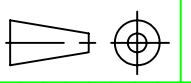
REF 1
M 10:1

PNL/REF #	QTY	UOM	PART NAME	MATERIAL	REF. SHEET/DWG.
			RING	COPPER	

PARTS LIST		PERMISSIBLE VARIATION IN MM DIMENSIONS WITHOUT TOLERANCES	
DIMEN	< 3	3-6	6-10
TOLER	±0.05	±0.06	±0.075
DIMEN	10-18	18-30	30-50
TOLER	±0.105	±0.125	±0.150
DIMEN	50-125	125-250	250-500
TOLER	±0.200	±0.250	±0.315
DIMEN	500-800	800-1200	1200-2500
TOLER	±0.315	±0.375	±0.450
DIMEN	2500-5000	5000-10000	10000-25000
TOLER	±0.450	±0.560	±0.690
DIMEN	25.4	50.8	101.6
TOLER	±0.025	±0.0315	±0.0375
DIMEN	1.5	3.0	6.0
TOLER	±0.015	±0.019	±0.023

SURFACE TEXTURE: $R_{a} 1.25$
TOLERANCES ARE NOT ACCUMULATIVE

UNLESS OTHERWISE SPECIFIED:	UNLESS OTHERWISE SPECIFIED:
1. DIMENSIONS ARE IN MM.	1. DIMENSIONS ARE IN MM.
2. MACHINE SURFACES TO BE FLAT, SQUARE, PARALLEL, & CONCENTRIC WITHIN .020 FOR 100 MM OR .020 THR AS APPLICABLE.	2. MACHINE SURFACES TO BE FLAT, SQUARE, PARALLEL, & CONCENTRIC WITHIN .020 FOR 100 MM OR .020 THR AS APPLICABLE.
3. MARK ALL DETAILS (EXCEPT COMMERCIAL PARTS) WITH DIM, & ITEM NUMBER.	3. MARK ALL DETAILS (EXCEPT COMMERCIAL PARTS) WITH DIM, & ITEM NUMBER.
4. RILEY'S SHARP CORNERS: 15° & 45° CHAMFER.	4. RILEY'S SHARP CORNERS: 15° & 45° CHAMFER.
5. RILEY'S SHARP RADIUS.	5. RILEY'S SHARP RADIUS.
6. TAPPED HOLES: MIN DEPTH 2.0 x DIA.	6. TAPPED HOLES: MIN DEPTH 2.0 x DIA.
7. CSINK BORED & REAMED HOLES 1.5 x 45°.	7. CSINK BORED & REAMED HOLES 1.5 x 45°.
8. CENTERS PERMISSIBLE.	8. CENTERS PERMISSIBLE.
9. DO NOT SCALE DRAWING.	9. DO NOT SCALE DRAWING.
10. ALL WELDING TO CONFORM TO LATEST A.M.S. STANDARDS.	10. ALL WELDING TO CONFORM TO LATEST A.M.S. STANDARDS.



THE CYLON GRID MESH RING

BRANDEIS
HIGH ENERGY PHYSICS LABORATORY

DRW: ANDREY
CHKD: ANDREY
APP: HW

DATE: 10/22/19

PROJECT NUMBER: 100

DRAWING NUMBER: 1 OF 1

REVISION: A

SCALE: 1:4

SIZE: D

SECTION A-A

M 10:1

0.091 TYP

0.118

0.059

4.871

4.317

1

0.000

39.7

20.8

3.5

4xØ0.260 THRU

52x#4-40 THRU

4xØ0.260 THRU

Ø12.807

Ø12.071

Ø12.307

Ø13.307

4.317

4.871

2

3

4

5

6

A

B

C

D

1

2

3

4

5

6

A

B

C

D

1

2

3

4

5

6

A

B

C

D

1

2

3

4

5

6

A

B

C

D

1

2

3

4

5

6

A

B

C

D

1

2

3

4

5

6

A

B

C

D

1

2

3

4

5

6

A

B

C

D

1

2

3

4

5

6

A

B

C

D

1

2

3

4

5

6

A

B

C

D

1

2

3

4

5

6

A

B

C

D

1

2

3

4

5

6

A

B

C

D

1

2

3

4

5

6

A

B

C

D

1

2

3

4

5

6

A

B

C

D

1

2

3

4

5

6

A

B

C

D

1

2

3

4

5

6

A

B

C

D

1

2

3

4

5

6

A

B

C

D

1

2

3

4

5

6

A

B

C

D

1

2

3

4

5

6

A

B

C

D

1

2

3

4

5

6

A

B

C

D

1

2

3

4

5

6

A

B

C

D

1

2

3

4

5

6

A

B

C

D

1

2

3

4

5

6

A

B

C

D

1

2

3

4</